

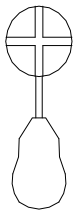
0380 MINI TABLE



Assembly Instructions.

Please read these instructions carefully before assembling the unit and where necessary refer to the enclosed Component List.

Additional Tools Required.



Adults Required For Assembly.



Maintenance.

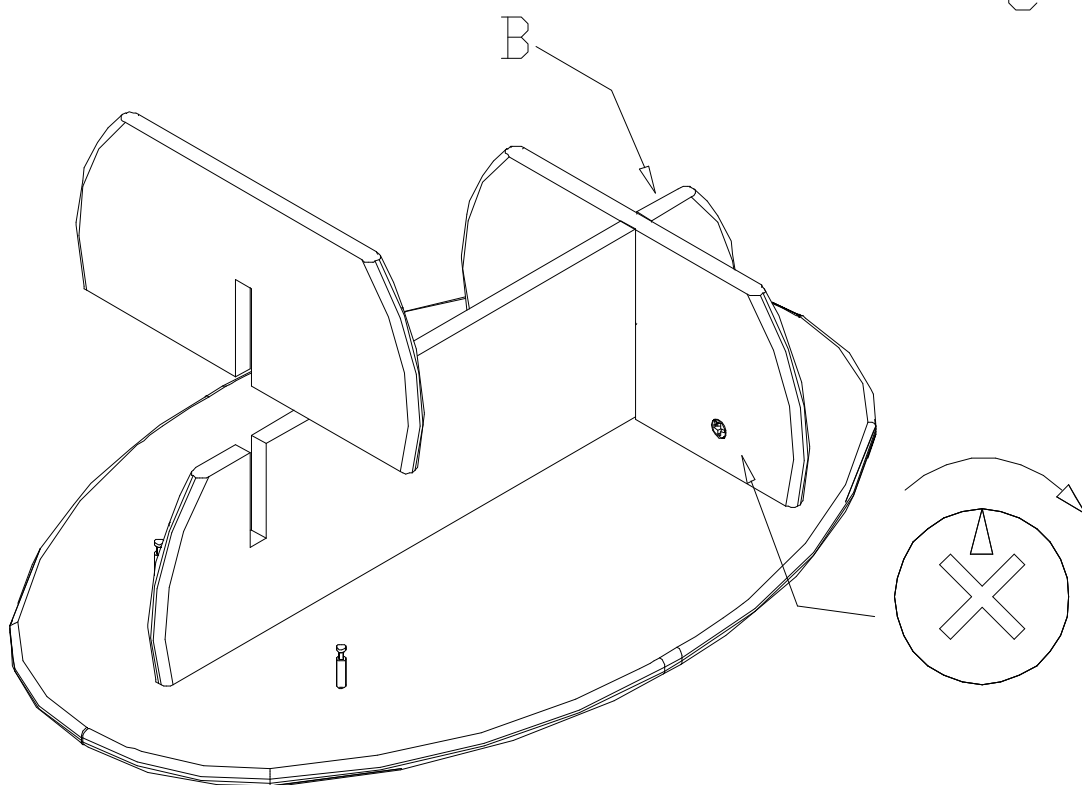
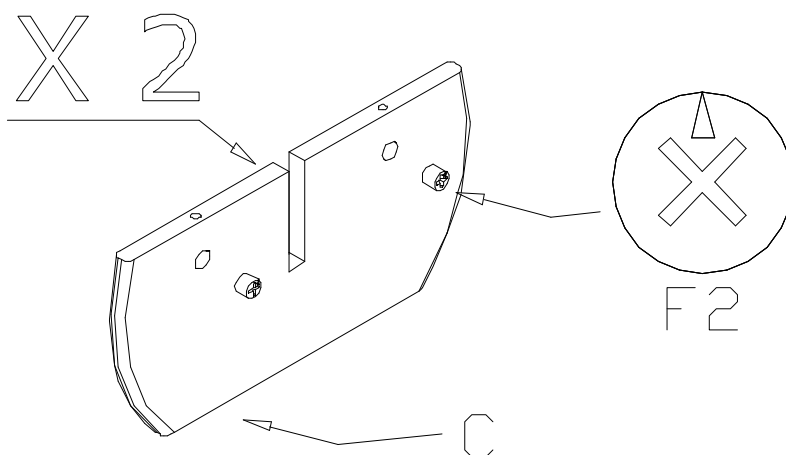
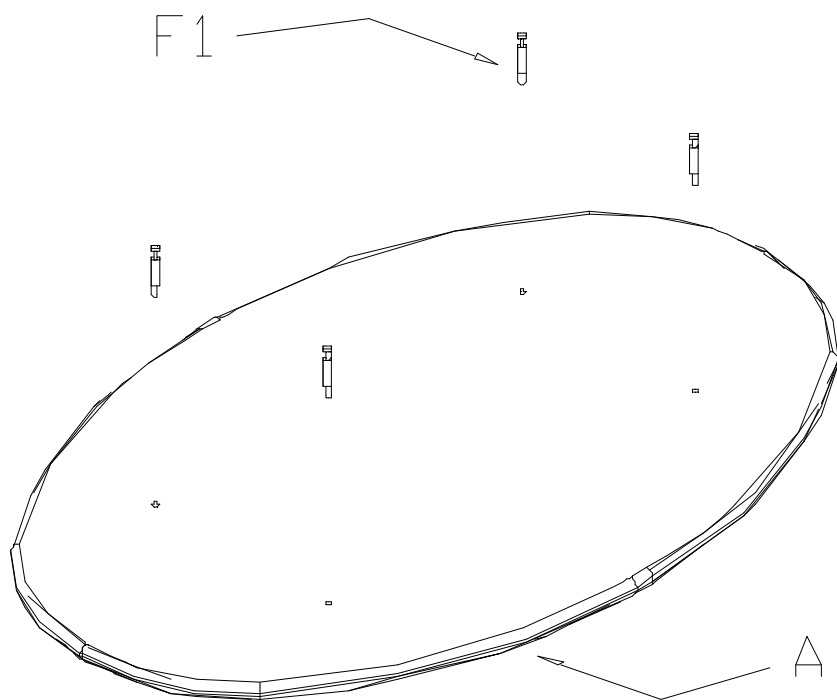
Your unit may be cleaned with a damp cloth; stubborn marks may be removed with a mild detergent or non-abrasive cream cleaner. Examine all fasteners periodically and retighten where necessary. Care must be taken not to over tighten the fasteners.

This unit is designed for use indoors on a flat level surface.

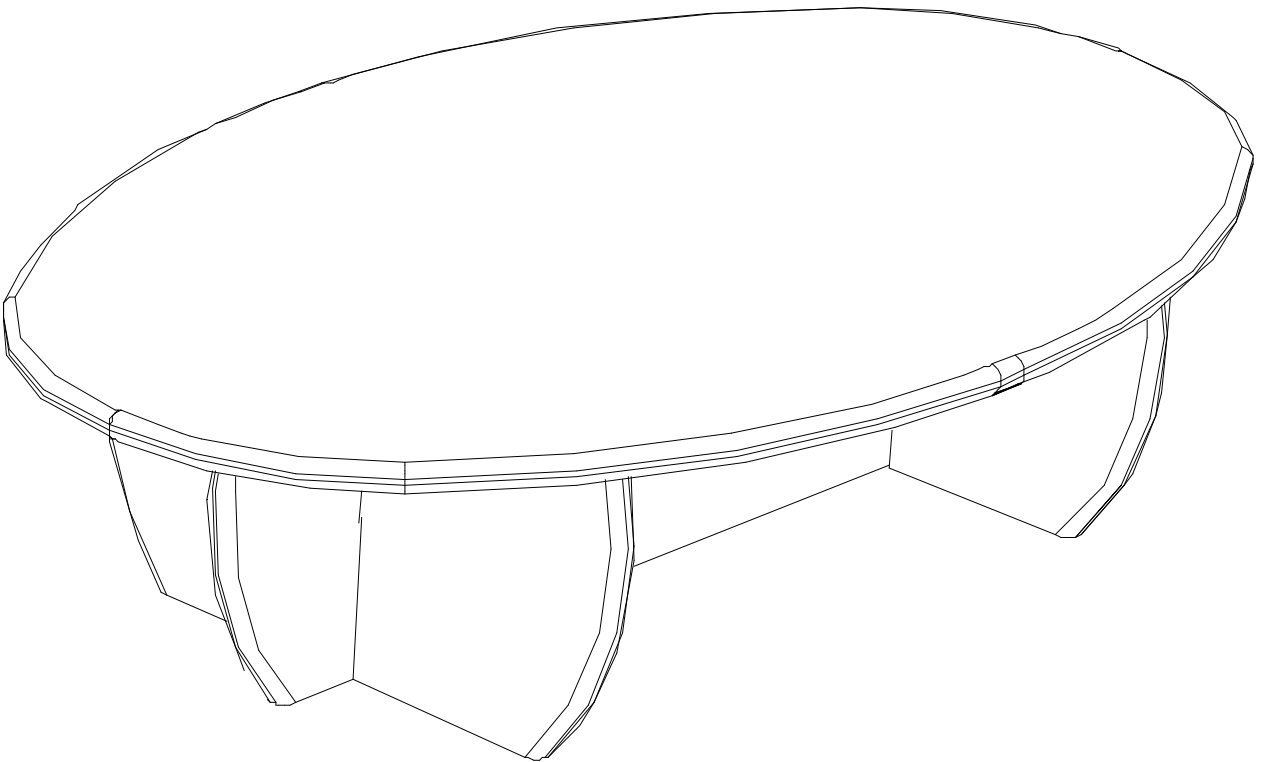
An Adult Should **ALWAYS SUPERVISE PLAY!**

Please retain our address for future reference

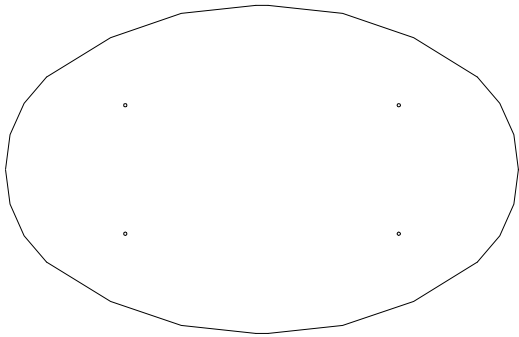
Manufactured by:
Mike Miller Associates Ltd.,
Syke Road, Wigton. Cumbria CA7 9NS
Tel: 016973 49774/45300 Fax: 016973 45511
Email: info@twoeytoys.com
Website: www.twoeytoys.com
Registered in England No: 1425839
Registered Office: The Old Brewery, Caldbeck.
Cumbria CA7 8EW



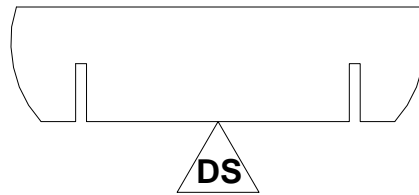
0380 – MINI TABLE



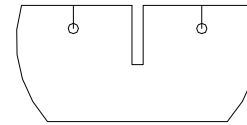
0380 - MINI TABLE (CS0000) COMPONENTS LIST



A
PN: 0380101
QTY 1

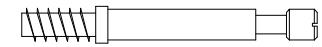


B
PN: 0380201
QTY 1



C
PN: 0380301
QTY 2

KIT LIST



F1
MINIFIX BOLT
PN: FC3410MINI15
QTY 4



F2
MINIFIX HOUSING
PN: FC15C
QTY 4