

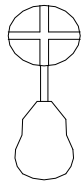
**401957
Double Sided Storage
Play Table**



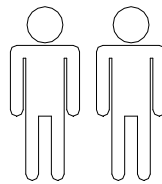
Assembly Instructions.

Please read these instructions carefully before assembling the unit and where necessary refer to the enclosed Component List.

Additional Tools required



Adults required for assembly



Maintenance.

Your unit may be cleaned with a damp cloth. Stubborn marks may be removed with a mild detergent, or non-abrasive cream cleaner. Examine all fasteners periodically and retighten if necessary. Care must be taken not to over tighten the fasteners.

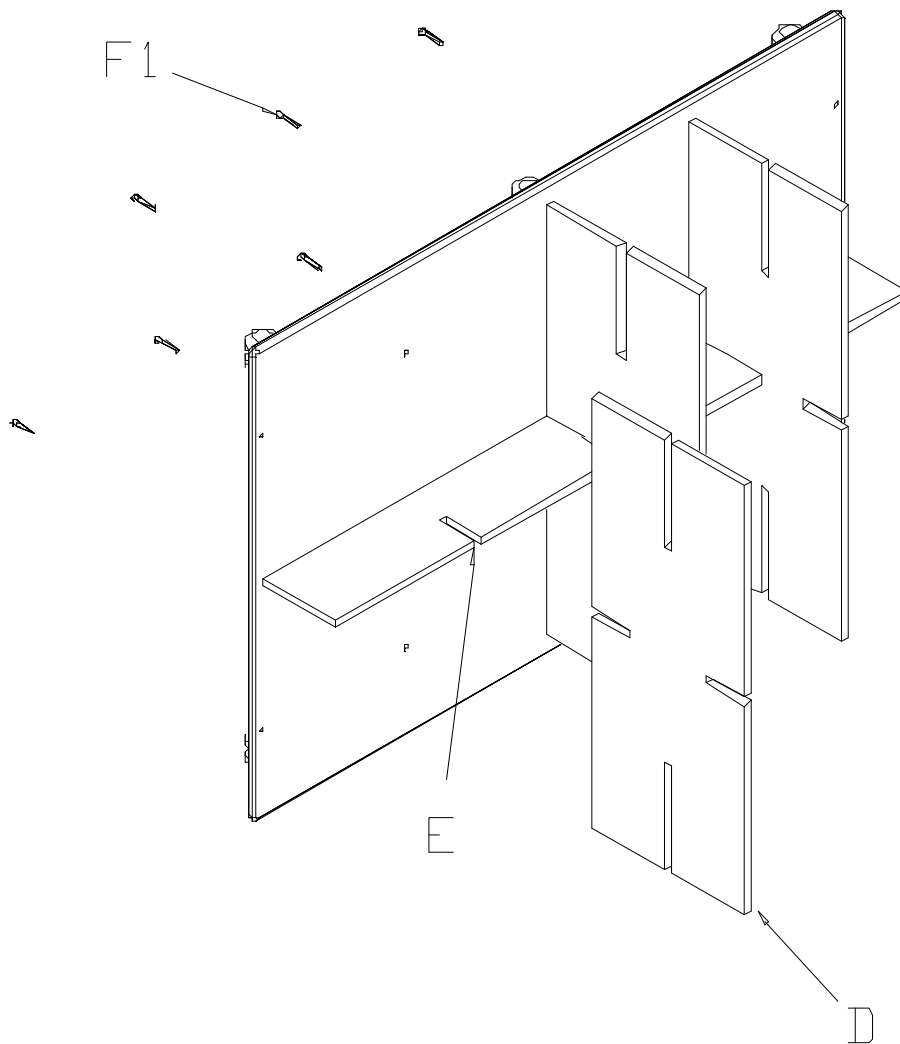
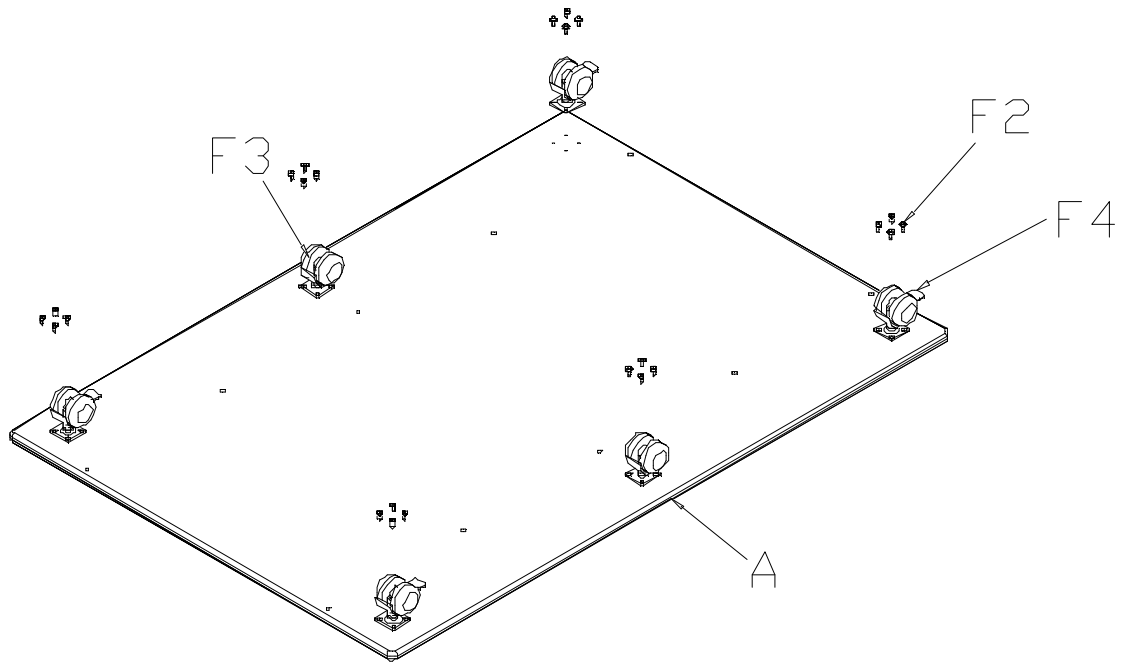
Drywipe Board Care.

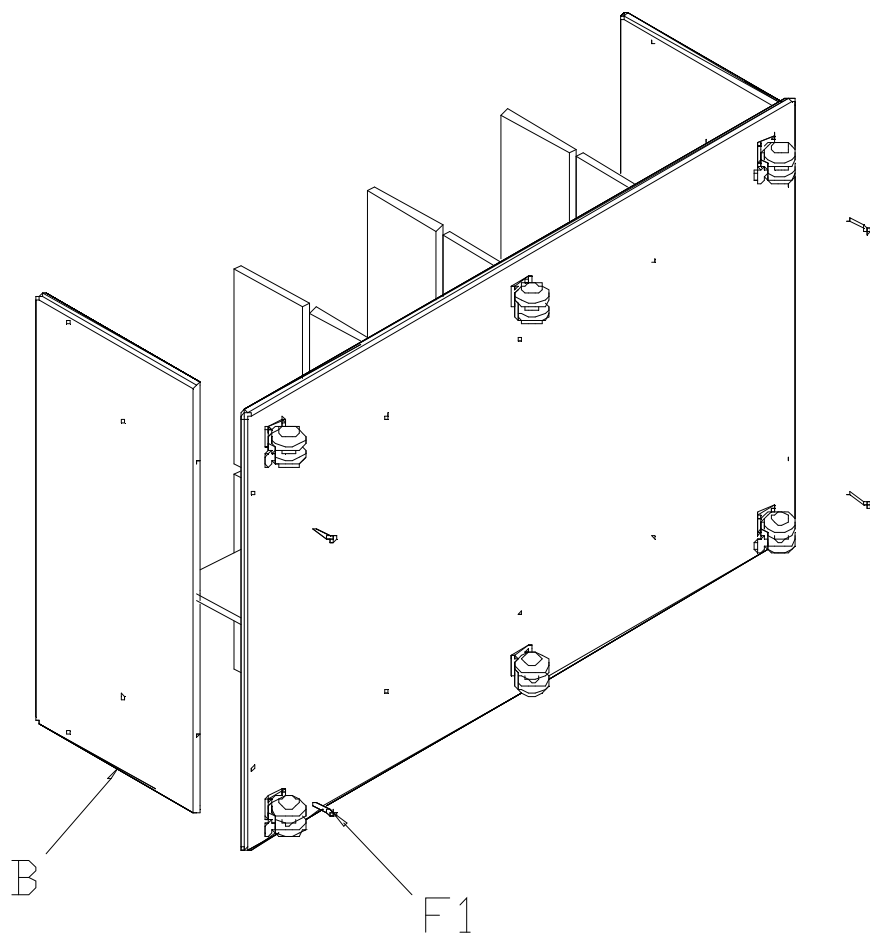
This white surface may not be compatible with all dry wipe marker pens, as some may leave stains. You are therefore advised to experiment with the pens on the edge of the surface before full usage occurs. After a while, even satisfactory pens may leave some "watermark" effects – Occasional cleaning with a soft, clean, damp cloth should help to minimise this.

This unit is designed for use indoors on a flat and level surface.

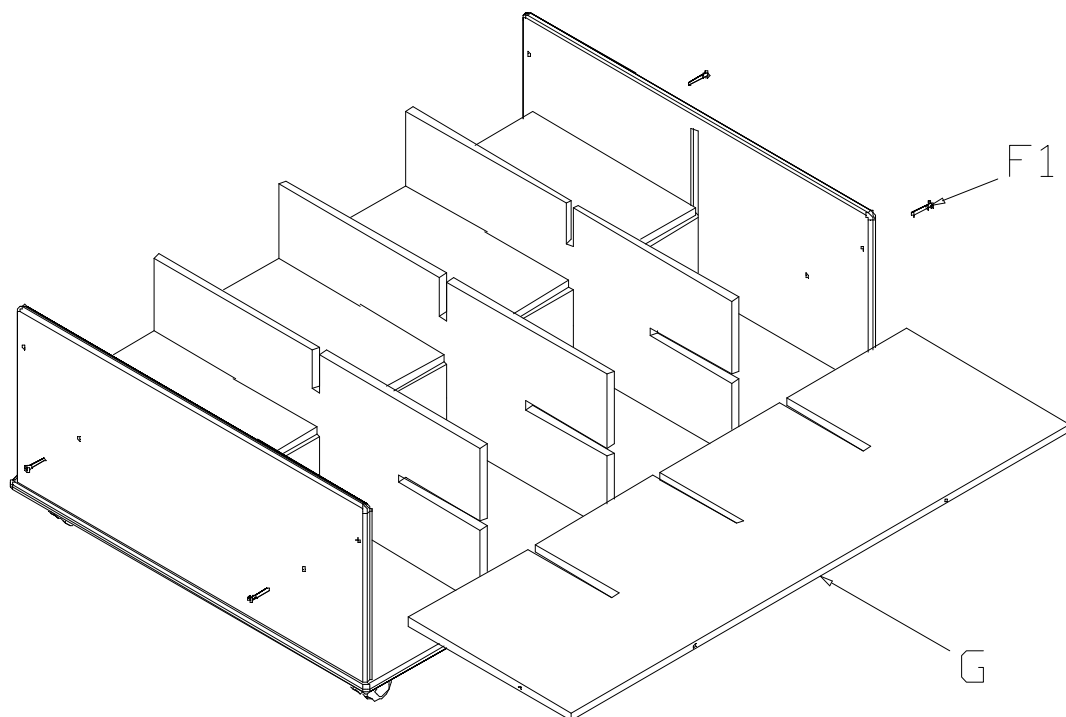
Please retain our address for future reference

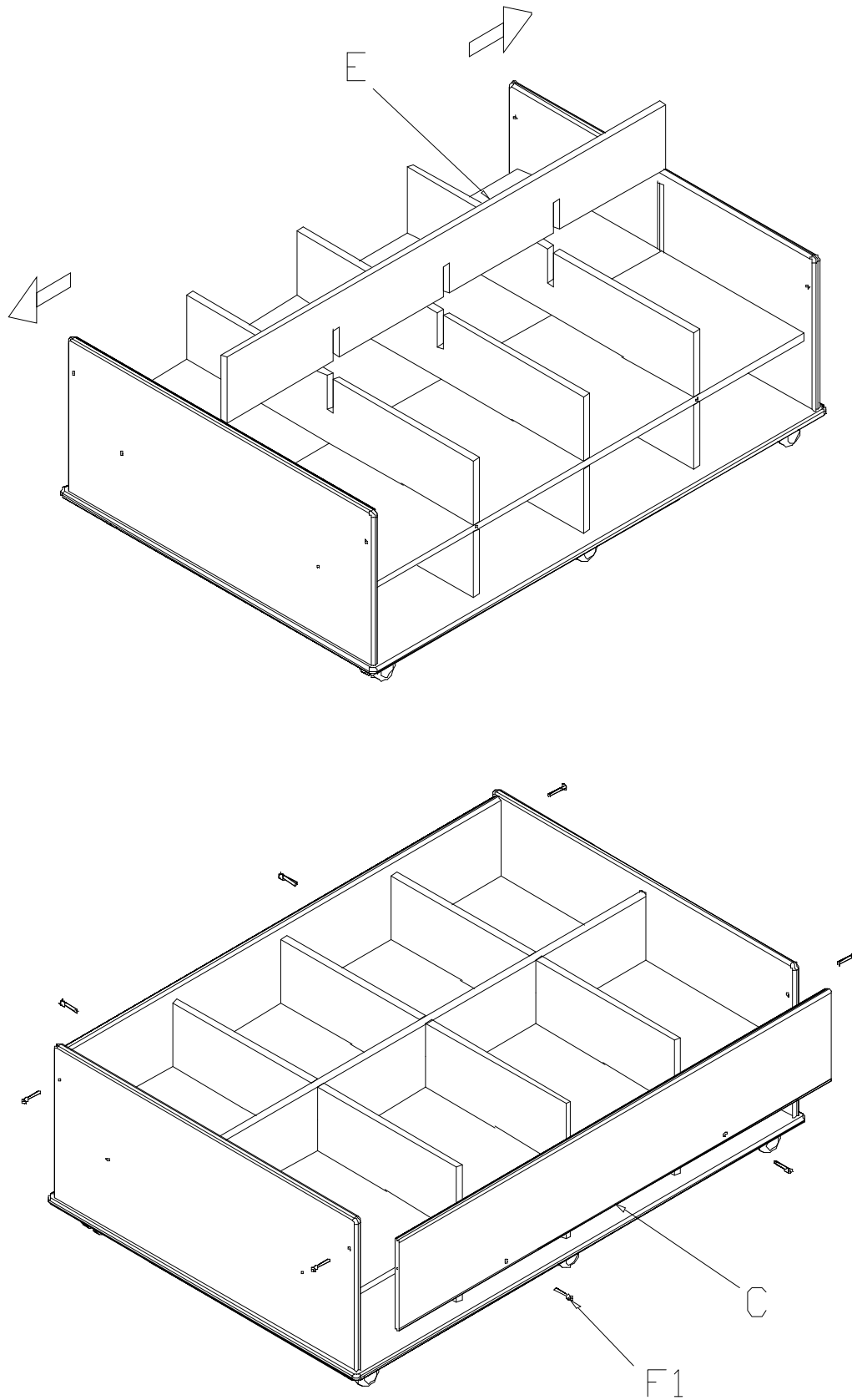
The Consortium Orders
Hammond Way, Trowbridge
Wiltshire
BA14 8RR
Tel.No:0845 330 7780
Online: www.theconsortium.co.uk



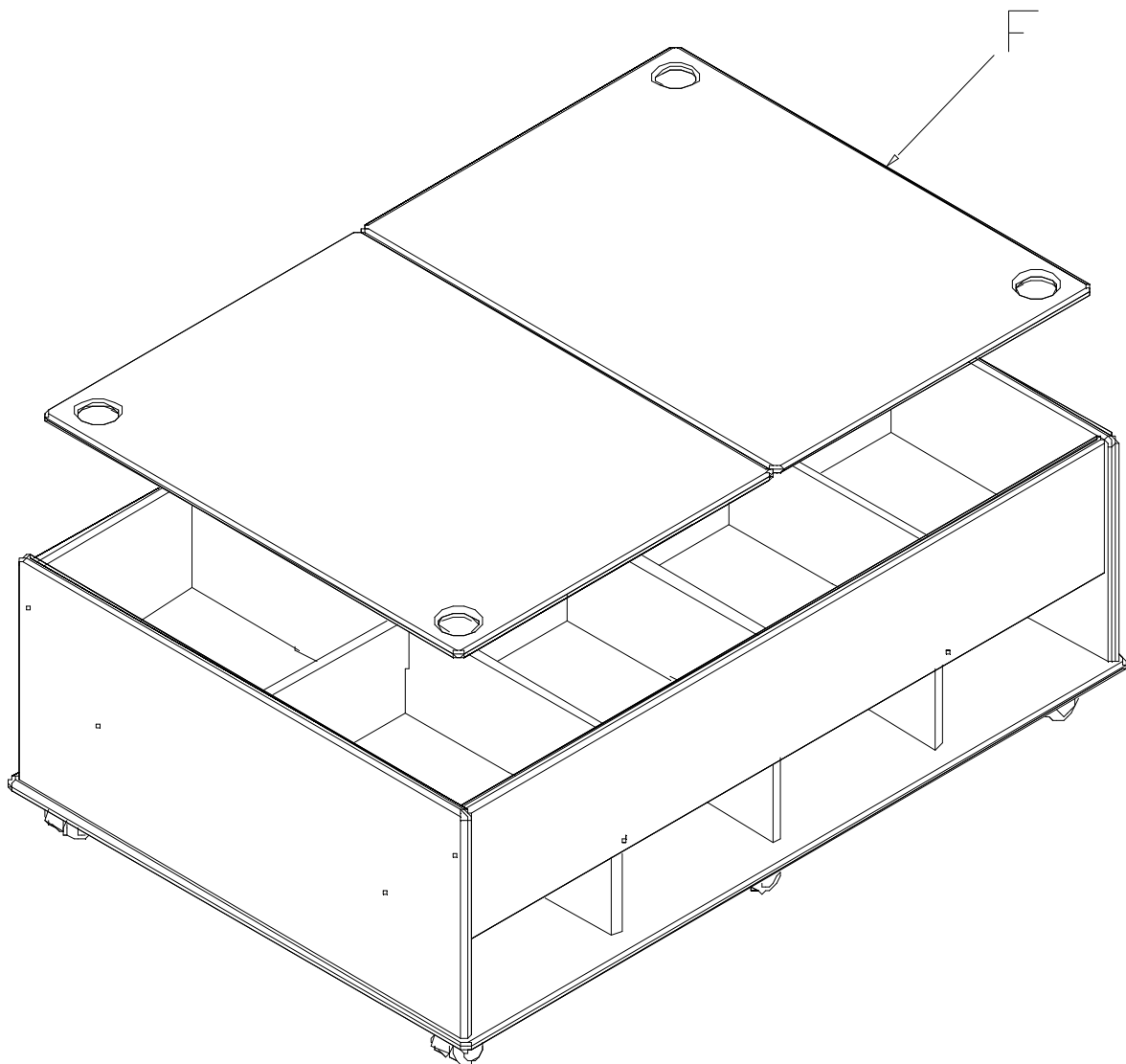


DO NOT FULLY TIGHTEN FASTENERS UNTIL ALL PARTS HAVE BEEN ASSEMBLED

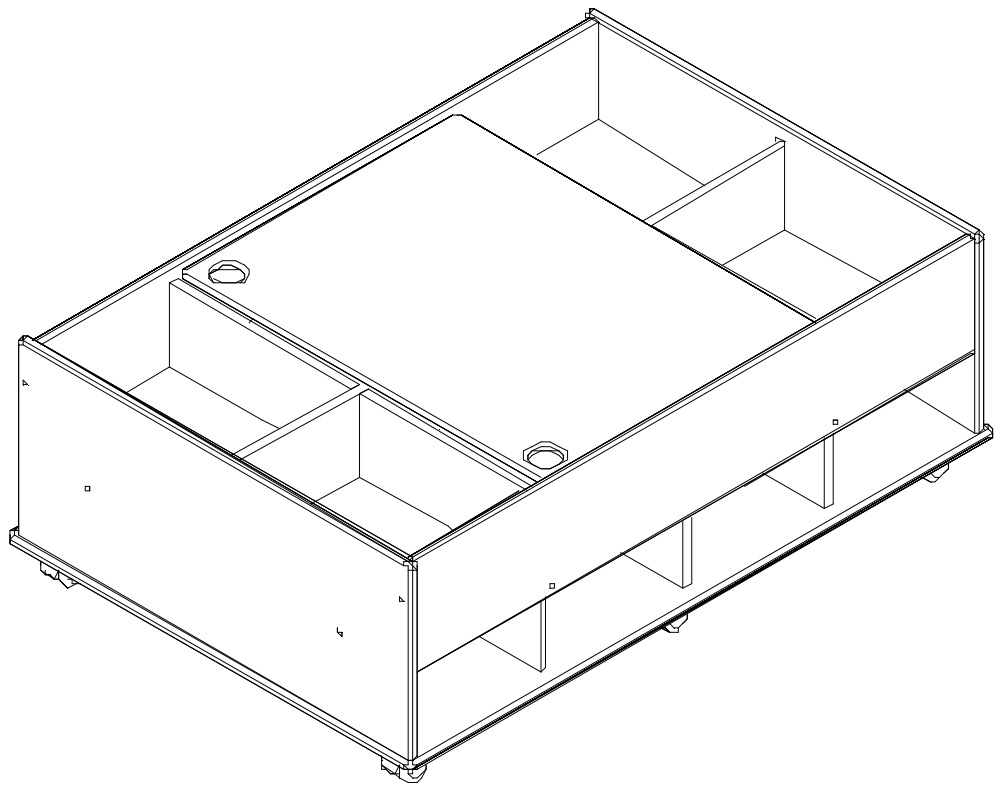
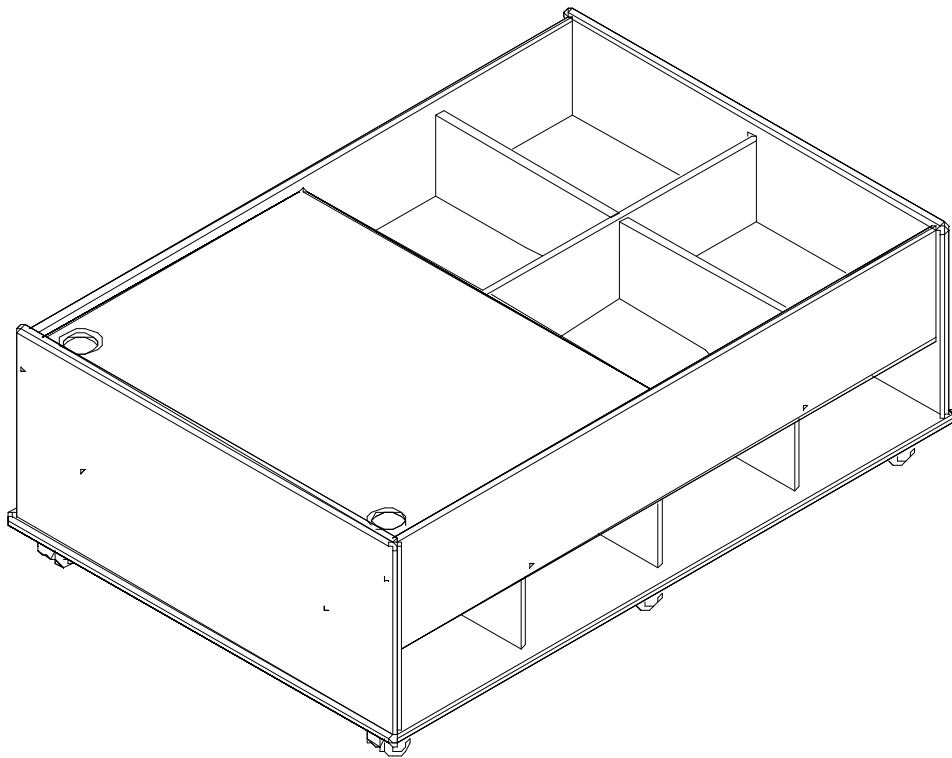




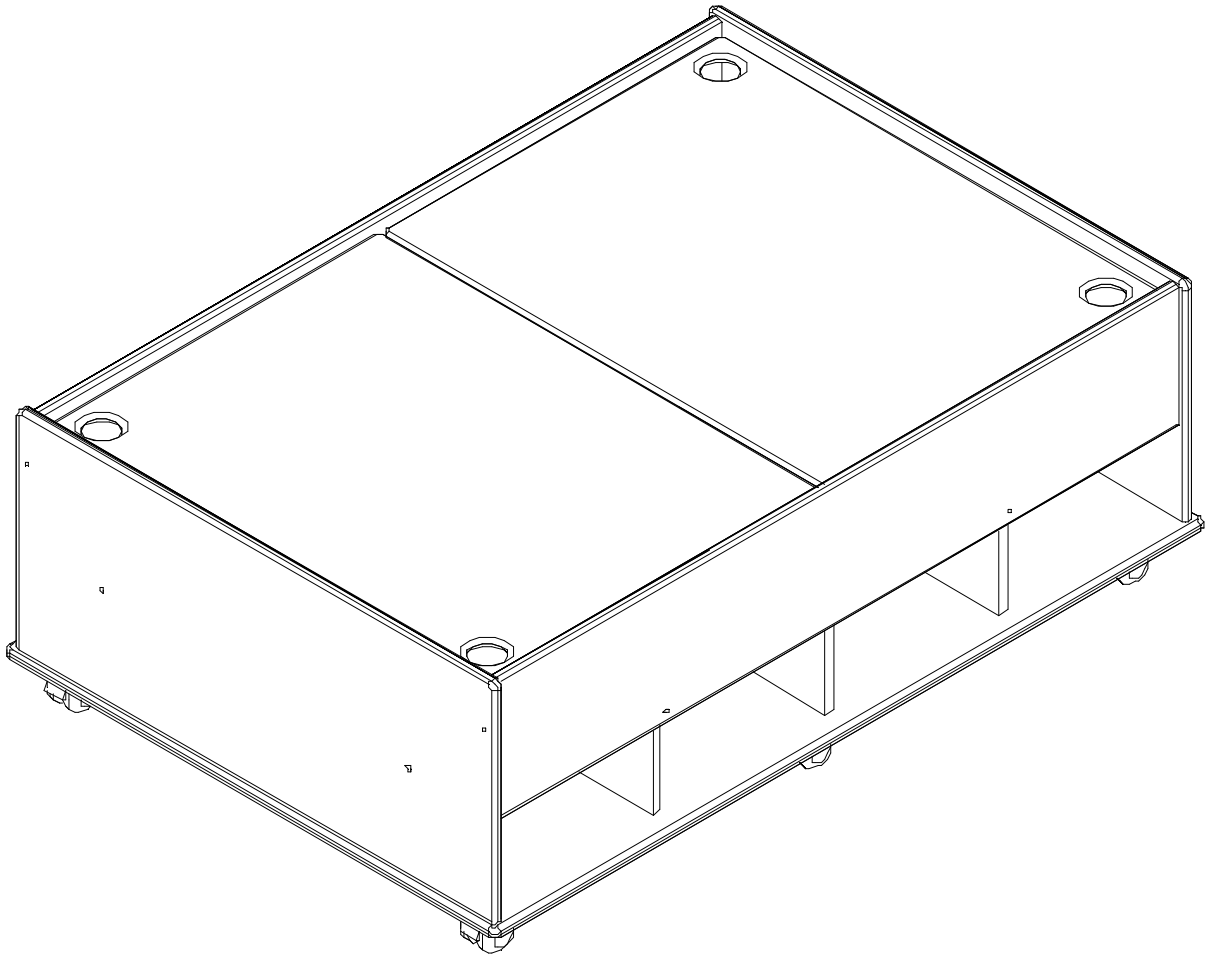
ALL FASTENERS SHOULD NOW BE FULLY TIGHTENED BEFORE USING THE UNIT



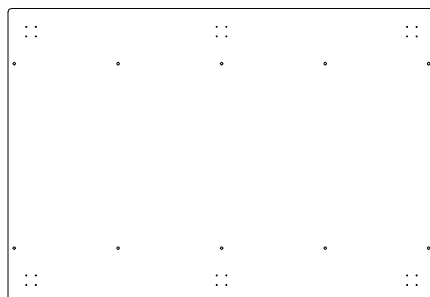
Arrangement Options



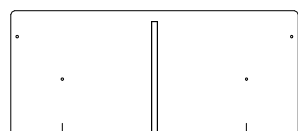
The Double Sided Storage Play Table



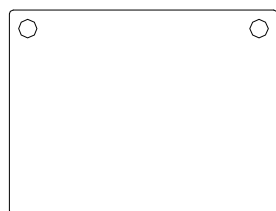
401957 - DOUBLE SIDED STORAGE PLAY TABLE (CS0464) COMPONENT LIST



BASE (A)
PART NO.2640101
QTY 1



END (B)
PART NO.2640201
QTY 2



BOARD (F)
PART NO.2640601
QTY 2

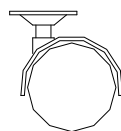
KIT (SOME EXTRA'S INCLUDED)



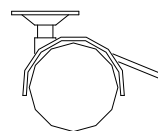
SUPERJOINER (F1)
PART NO.FS6338SW4
QTY 24



SCREW PAN HD (F2)
NO.10 x 1/2"
PART NO.FS101/2P
QTY 26



CASTOR (F3)
C/W PLATE
PART NO.ACGR50P
QTY 2



CASTOR LOCKING (F4)
C/W PLATE
PART NO.ACGR50PB
QTY 4

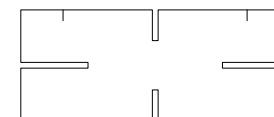


ALLEN KEY
PART NO.AMSW4
QTY 1

PACK 1



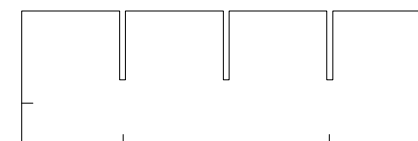
SIDE (C)
PART NO.2640301
QTY 2



DIVIDER (D)
PART NO.2640401
QTY 3



SPACER (E)
PART NO.2640501
QTY 2



SHELF (G)
PART NO.2640701
QTY 2

PACK 2